

KITCHEN SPECIAL

THE *new* CLASSICS

Three impeccable
kitchens that prove time-
honoured style just keeps
getting better and better!



KITCHEN SPECIAL

By tearing down the wall between the kitchen and living-dining area, designer Rebecca Hay created the large open space this couple desired. "We entertain a lot, and my husband is a big cook," says homeowner Jackie VanDerMeulen. "Now he can be part of the action when company's over."

Vintage schoolhouse-style pendant lights contribute to the kitchen's bistro feel.



1

BISTRO CLASSIC

HIGH-CONTRAST PALETTE + CHEVRON-TILED BACKSPLASH + YELLOW & BRASS ACCENTS + VINTAGE TOUCHES



LEFT & BELOW The mosaic marble backsplash, made of Thassos and Carrara marbles, creates a luxurious setting and adds interest with its timeless chevron pattern. "It matches the sleek quartz countertops and seamless white sink," says Rebecca, who's a big fan of running a backsplash all the way to the ceiling. "It creates the illusion that the whole wall behind the cabinetry is tiled." The contrasting colour scheme of indigo blue and warm whites, with hits of yellow and brass, helps establish an airy and inviting aesthetic.



TEXT LAURA MUIR

PHOTOGRAPHY STEPHANI BUCHMAN

STYLING ANN MARIE FAVOT

Jackie VanDerMeulen and Stewart Thom lived in their semi-detached east Toronto home for three years before it was time for their scruffy, storage-challenged kitchen to go. Stuck in a '90s time warp and suffering from lots of wasted space, it featured shabby maple cabinetry and a terracotta-tiled backsplash, countertop *and* floor. The busy couple – both lawyers and parents to Arthur, 2, and Graeme, 9 months – sought a more



functional, open-concept kitchen suitable for raising their children and entertaining friends, a common request by young families. But thanks to designer Rebecca Hay, the warm and eclectic results are decidedly unique. A mix of traditional and clean-lined elements, a high-contrast colour palette, vintage touches and hits of wood create an inviting kitchen with covetable character that's a far cry from its dated start.



ABOVE, LEFT The brass cabinetry hardware echoes other elements, such as the vintage pendant lights and the detailing on the walnut stools, which all lend a trendy yet timeless appeal.

ABOVE An empty wall provided an unexpected opportunity to build a hard-working pantry complete with a broom closet, pullout shelves, cupboards for small appliances and lesser-used items, as well as a spot for the fridge. "But we discovered there was space between the exterior wall and interior framing," says Rebecca. "So we moved some ductwork and consolidated the HVAC where the plumbing is and gained about 10 inches of extra space, which allowed us to create ample storage."

LEFT Integrated into the new pantry wall, a small nook with a bench and coat hooks serves as a mini-mud room. "We needed this nook for jackets and boots and things because we have alley parking and often enter through the back door," says Jackie, whose mom made the bench and coat rack, as well as the floating shelves (pictured opposite). "My mom took up carpentry in her retirement," she says.

OPPOSITE The floating shelves enhance the kitchen's airiness and tie in with the other wooden elements in the room, adding an industrial note. "They have that nice raw edge," says Jackie. The Roman shade complements the colour scheme and presents some playful pattern alongside the chevron-tiled backsplash.

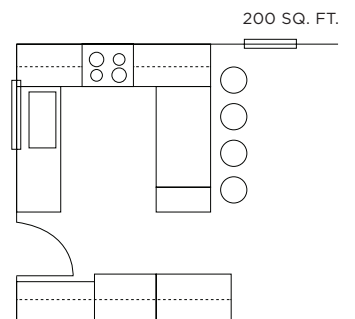




BEFORE



FLOOR PLAN



BUDGET ELEMENT

The bench, coat rack and open shelves WERE
DIY PIECES CONSTRUCTED
BY JACKIE'S MOM.

DESIGN, Rebecca Hay Designs, rebeccahay-designs.com; **CONTRACTING, FLOORING**, TriMatrix Construction; 2125-60 Marilyn's Dress **WALL PAINT**, HC-155 Newburyport Blue **CABINETY & ISLAND BASE PAINT**, CC-40 Cloud White **UPPER CABINETY PAINT**, Benjamin Moore; **COUNTERTOPS**, Caesarstone Canada; **BACKSPLASH TILES**, Marble Granite Depot; **REFRIGERATOR, OVEN, RANGE**, Jenn-Air; **DISHWASHER**, Whirlpool; **FAUCET**, Amazon.ca; **STOOL FABRIC**, Designer Fabrics; custom **STOOLS**, Urban Reclaimed; **ROMAN SHADE**, Tonic Living; **PENDANT LIGHTS**, The Door Store; **CABINETY HARDWARE**, Upper Canada Specialty Hardware; **BOWL**, Elte.

FOR SOURCES, SEE OUR WORKBOOK

This kitchen overhaul included reconfiguring rooms (the laundry space was moved to the second floor and the powder room was relocated on the first) and adding an extension that replaced a covered porch at the back of the house. The resulting 22-by-20-foot kitchen is bright, expansive and full of character.

OPPOSITE With practicality in mind, designer Shirley Meisels outfitted the kitchen with two types of countertop material. “Marble can be a little temperamental,” she says. “So we chose more durable composite quartz for the cooking areas and used marble on the island, which has no sink and won’t be used as a prep station.”

Fresh greenery provides low-commitment colour in the all-white kitchen.



2

MODERN CLASSIC

ALL-WHITE PALETTE + GLASS BACKSPLASH + TRADITIONAL ARCHITECTURE + CONTEMPORARY FURNISHINGS



TEXT LAURA MUIR | **PHOTOGRAPHY** STACEY BRANDFORD

STYLING ANN MARIE FAVOT

As far as design overhauls go, this kitchen takes the cake. Once dark, narrow and tired, with basic fittings and worn-down finishes, it's now light, bright and expansive – a contemporary design with serious wow factor, thanks to designer Shirley Meisels of MHouse. After living in this midtown Toronto Georgian-style house for 31 years, the homeowners were ready for a change. They wanted something youthful, fresh and modern, with ample room to host large family gatherings for their kids and grandchildren. Inspired by the European trend of marrying



traditional architecture with modern design, the couple chose a mix of ultra-sleek details, such as minimalistic all-white cabinetry and a glass backsplash, and old-world elements like a coffered ceiling and sash windows. The result is not only a fresh youthful space where the family loves to hang out when they visit, but also one of the homeowners' favourite spots in the house when they're solo.



A glass backsplash emphasizes the modern kitchen's sleek, seamless aesthetic.



ABOVE, LEFT A small shelf keeps cooking essentials within easy reach of the range. It's raised off the countertop to avoid a cluttered look.

ABOVE The über-modern brass pendant lights, with their simple geometric design, as well as the iconic Louis Ghost stools, are sculptural focal points that add modern edge. The light oak floors were a happy accident. "Originally, they were going to be re-stained in a dark finish," says Shirley. "But when the existing stain was stripped from the floor, the homeowners loved the lighter look and decided to keep it."

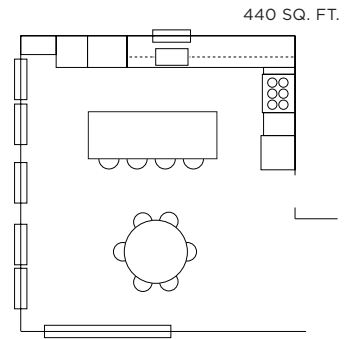
LEFT Structural elements, such as the wall panelling (shown here), sash windows and coffered ceiling, lend traditional character that suits the architectural style of the house,

creating an intriguing juxtaposition with the kitchen's contemporary aesthetic. The artwork adds bright colour to the otherwise muted space.

OPPOSITE Defined by a mix of old and new, the eat-in area features a Mid-Century Modern Saarinen dining table surrounded by Louis XVI-style dining chairs with wipeable white vinyl seats. "Those chairs used to be in my dining room," says one of the homeowners. "They're probably 36 years old and have been re-covered several times." The windows and French doors lead to the backyard and let in lots of natural light.



FLOOR PLAN



BUDGET ELEMENT

MANY OF THE furnishings are items the homeowner already had, SUCH AS THE EAT-IN AREA'S DINING CHAIRS.

DESIGN, MHouse, mhouseinc.com; **CONTRACTING**, LW Build; Oxford White CC-30 **WALL PAINT**, Benjamin Moore; **CABINETY**, quartz composite **COUNTERTOP, ISLAND, BACK-SPLASH**, hanging **SHELF, CABINETY HARDWARE**, Bulthaup; **ISLAND COUNTERTOP**, Crystal Tile & Marble; **APPLIANCES**, hot water **FAUCET**, Appliance Canada; Moen **FAUCET**, Taps Bath Centre; Saarinen **DINING TABLE**, Hollace Cluny; **DINING CHAIRS**, Art Shoppe; **DINING CHAIR FABRIC**, Threadcount Textile & Design; **CABINET**, Elte; **STOOLS**, Suite 22 Interiors; **FLOORING**, Capital Hardwood Flooring; **PENDANT LIGHTS**, Lambert & Fils; *Suspended #6 ARTWORK* (above cabinet) by Bobbie Burgers, Bau-Xi Gallery.

FOR SOURCES, SEE OUR WORKBOOK



Thonet-style stools lend the kitchen an elegance befitting a French restaurant.

3

CONTEMPORARY CLASSIC

BLACK & WHITE PALETTE + SQUARE-TILED BACKSPLASH + SHAKER-STYLE CABINETRY + ICONIC FURNISHINGS



OPPOSITE Opening up the 11-by-18-foot kitchen to the rest of the main floor and replacing the back wall with a glass-panelled door and sidelights were the first steps in creating a more airy and light-filled space. The kitchen has a timeless aesthetic, with Shaker-style cabinetry, classic architectural details and a neutral palette, while a few of-the-moment touches, such as the brass hardware and pendant lights, keep it hip. "It's a brick house with traditional details like beams and mouldings at the front, and we wanted to carry that essence into the kitchen," says designer Vanessa Kwan.

LEFT A banquette serves as part of the casual eat-in area for the couple and their children, Sadie, 6, and Spencer, 2. It features storage in the form of legal-sized filing cabinets, with flush brass pulls that don't get in the way of dangling feet. Finding a table that fit the space proved challenging, so homeowner Mike Shannon built the base himself and had a piece of glass cut for the top. The Eames chairs are a classic pick, and the chandelier provides sparkle and blends in with all the brass.

TEXT LAURA MUIR | PHOTOGRAPHY DONNA GRIFFITH | STYLING ANN MARIE FAVOT

Armed with a wishlist

a mile long, Toronto homeowners Meghan Mann and Mike Shannon took the renovation plunge last year. With the help of designers Vanessa Kwan and Ingrid Oomen of Qumunicate, they transformed their dysfunctional, dowdy kitchen into a stylish dream and fit everything they wanted into



its compact 198-square-foot space. The open-concept design now features a work station, an eat-in nook and a peninsula that overlooks the dining area. Its classic-chic look with a contemporary edge not only complements the young couple's style but also suits the 1910 house's traditional architecture and its up-and-coming west Toronto neighbourhood's trendy vibe.



Cork flooring and a cowhide rug warm up the stark black and white palette.



ABOVE The kitchen was designed with family-friendly functionality top of mind: The white quartzite countertops are aesthetically similar to marble but are more durable and require less maintenance; the six-inch-square ceramic tiled backsplash, with its grey grout, is easy to keep clean; and the cork floors are great for kids because they're soft underfoot and don't scratch easily. For homeowner Meghan Mann, who works in software sales from home, the desk area (with a lower counter and two pencil drawers) was a must.

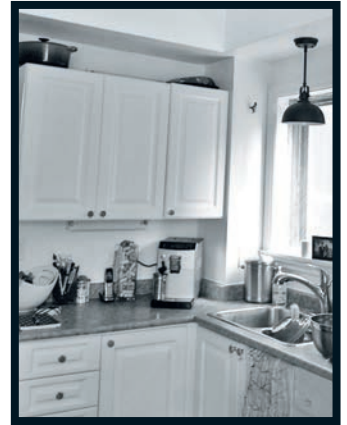
LEFT A white-painted corkboard displaying colourful children's artwork gives the eat-in area a healthy dose of personality and fun. "Pin boards are a common trick I like to use in the kitchens I design," says Vanessa. "Not only do parents love to display their kids' art, but forms that need

signing and schedules should be easy to spot. Since these boards can be visually busy, I try to tuck them somewhere less noticeable."

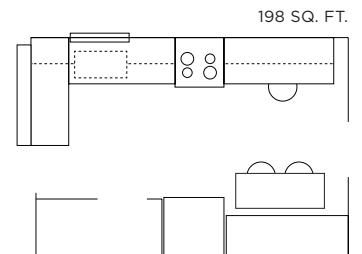
OPPOSITE The black faucets and window frame above the sink create contrast yet establish continuity with the black-painted door at the back of the room. The dark elements, offering the kitchen a slightly industrial edge, are also a nod to the neighbourhood's commercial architecture. "The area has a lot of old factory buildings, some converted into lofts or artists' spaces," says Meghan. "And they have those steel windows, so we wanted to echo that look in the kitchen."



BEFORE



FLOOR PLAN



BUDGET ELEMENT

Meghan found an inexpensive cowhide rug and cut it down to size INSTEAD OF BUYING ONE THAT FIT FOR \$800.

DESIGN, Qumunicate, qumunicate.com; **CONTRACTING**, Vano & Sons Contracting; **Pure White OC-64 CABINETRY PAINT**, Benjamin Moore; **Iron Ore SW 7069 DOOR & WINDOW FRAME PAINT**, Sherwin-Williams; **Super White quartzite COUNTERTOPS, SINK**, Asia Marbles; **BACKSPASH TILES**, Lowe's; **Bosch REFRIGERATOR**, Best Buy; **Bosch RANGE**, Faulkner's Appliance Centre; **Ancona RANGE HOOD**, Costco; **Bosch DISHWASHER**, Hudson's Bay; **FAUCETS**, Taps Bath Centre; **Eames DINING CHAIRS**, Morba; **BANQUETTE CUSHION FABRIC**, Designer Fabrics; **BANQUETTE CUSHION SEWING**, New Hope Upholstering; **STOOLS**, Artefac; **DESK CHAIR**, Elte; **FLOORING**, Alliance Floor Source; **cowhide RUG**, sheepskin **THROWS**, IKEA; **PENDANT LIGHTS**, Union Lighting and Furnishings; **CHANDELIER**, Sam the Chandelier Man; **CABINETS & BANQUETTE HARDWARE**, Upper Canada Specialty Hardware; **yellow TOSS CUSHION**, Elte Market; **BOWL** (on counter), Elte.

FOR SOURCES, SEE OUR WORKBOOK



bistro classic
get the look

Sunny yellow and brass accents complement the warm white and deep blue palette of this personality-packed kitchen.

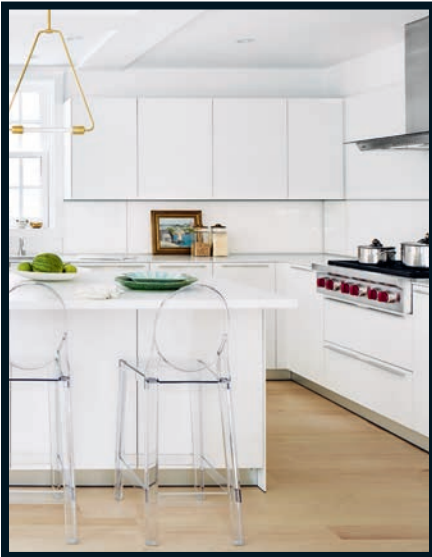


KitchenAid 2-quart **KETTLE** in Citrus Sun, \$60, Hudson's Bay, thebay.com.



Richelieu metal Contemporary **PULL** in Satin Brass, 3", \$5, The Home Depot, homedepot.ca.

Rose City brass and glass **PENDANT LIGHT** in Lacquered Polish Brass with Classic Schoolhouse Shade in Opal, 14", \$290 US, Rejuvenation, rejuvenation.com.



modern classic
get the look

Small hits of brass bring this sleek modern white kitchen to life.



Perchoir **PENDANT LIGHT** in Brass, 18", \$945, Lambert & Fils, lambertetfils.com.



MDF 2-door Luna **SIDEBOARD** in White, \$299, Structube, structube.com.



contemporary classic
get the look

Curvy iconic shapes and trendy accents make this kitchen downright covetable.

Round wood and marble **SERVING BOARD**, \$38, Indigo, indigo.ca.



Michael Thonet beech Era **STOOL** in Black, \$365, Design Within Reach, dwr.com.





Le Creuset round **FRENCH OVEN** in Dune, 4 l, \$485, Hudson's Bay, thebay.com.



Labell Canadian maple **CUTTING BOARDS**, \$22 per 2-piece set, Walmart, walmart.ca.



Stoneware Silo **CANISTERS** with bamboo lids, 16 oz., \$11, and 48 oz., \$25, Crate and Barrel, crateandbarrel.com.



Philippe Starck for Kartell polycarbonate **One More STOOL** in Clear, \$585, Design Within Reach, dwr.com.



Safavieh glazed ceramic **Tao GARDEN STOOL**, \$126, O.co.



Stoneware Cambria **DINNER PLATE** in Turquoise, \$40 US per set of 4, Pottery Barn, potterybarn.com.



Oval marble-topped Marcel **DINING TABLE**, \$2,975, Elte Market, eltemkt.com.



Cotton Soiree **TOSS CUSHION** in Natural with feather-down **INSERT**, \$63, CB2, cb2.com.



Jason Wu for Brizo mixed metal Solna **FAUCET** in Matte Black, \$611, Masco Canada, mascoCanada.com.

Brass and glass Luna **PENDANT LIGHT** with shade in Clear, 12", \$269 US, Schoolhouse Electric, schoolhouseelectric.com.



Cowhide Koldby **RUG** in Brown, \$299, IKEA, ikea.ca.

